

Greater Boise Recreationists

September 7, 2023

Bogus Basin Ticket Office Meeting Room

5:00- 7:00 pm

Greater Boise Recreationists Charter Statement

The Greater Boise Recreationists is a coalition of recreation users. The coalition exists to identify, propose, and guide year-round recreation needs and goals of public lands surrounding the greater Boise area. Our focus is on connectivity, corridors and collaboration. Together, we will strive to reduce land use conflicts while protecting natural resources for generations to come.

Greater Boise Recreationists



Three focus areas identified: Wilson Creek, Bogus Basin, and Highway 21 corridor.



Highway 21 Corridor and Whoop Um Up identified and selected for further discussion.

GBR Overview

- Mores Creek Summit and the Highway 21 corridor are the more heavily used public lands outside of Bogus Basin in the state of Idaho.
- This is an area that deserves our passionate care

Some Considerations of Proposed Parking Expansion

- ▶ Environmental→ wildlife, resources, water quality
- ▶ Recreational→
 - ▶ Winter and summer
 - ▶ How does this address the needs of recreation along Highway 21?
- ▶ Process→
 - ▶ USFS works project by project
 - ▶ Funding is acquired by outside sources
 - ▶ If USFS starts with the parking lot expansion, what does GBR recommend for the next projects?
 - ▶ Can signage be included in this first project to *SUGGEST different users use different trails?*

Discussion: Environmental Considerations

Please discuss for 10 minutes, in a group of 3, the following questions and prepare to report findings:

- ▶ How do we protect natural and cultural resources?
- ▶ Are there areas within the affected Forest Service land that should be off-limits to quiet and motorized recreation, to protect winter and summer habitat and to avoid avalanche prone areas?
- ▶ If so, what areas should be off-limits and why?

Discussion: Recreational Considerations

Please discuss for 10 minutes, in a group of 3, the following questions and prepare to report findings:

- ▶ What types of trails should and can be accessed from Whoop Um Up in the winter and in the summer?
- ▶ What are current issues with the existent trails?
- ▶ How do we create multi-purpose trails out of existing roads and trails?

REPORT TO WIDER GROUP

Discussion: USFS Process

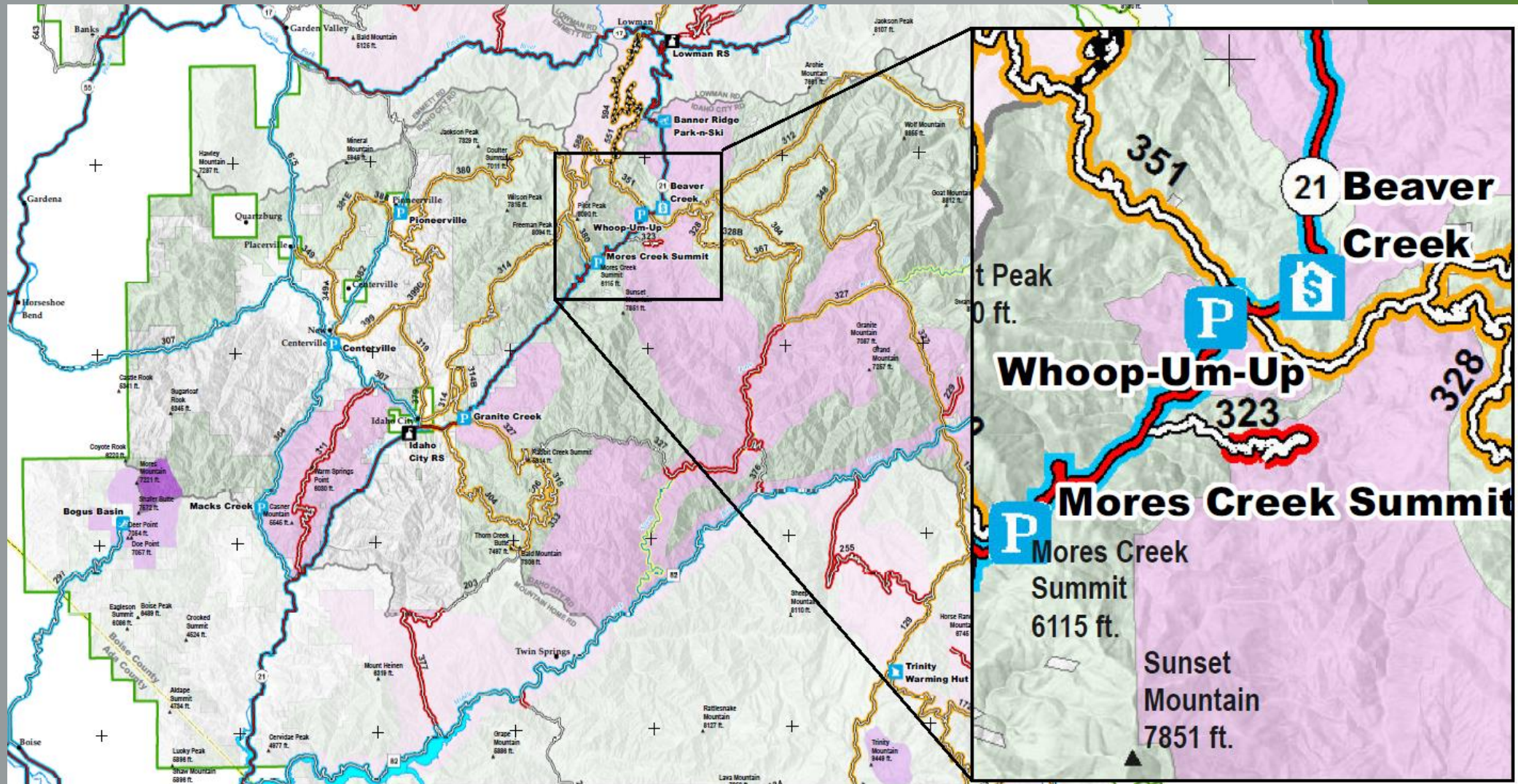
Please discuss for 5 minutes, in a group of 3, the following question and others that you choose and prepare to report findings:

- ▶ Process→
 - ▶ USFS works project by project
 - ▶ Funding is acquired by outside sources
 - ▶ If USFS starts with the parking lot expansion, what does GBR recommend for the next projects?
 - ▶ Can signage be included in this first project to *SUGGEST different users use different trails?*

REPORT TO WIDER GROUP

Where is Whoop Um Up?

Overview presented by Josh Newman, Idaho City Ranger



Population Growth in the Treasure Valley

▶ Parking Area History

- ▶ 1969-72: Snowmobile clubs, Boise County, State Highway department, USFS, and Idaho City collaborate for parking areas and loop trails around Boise Basin.
- ▶ 1998: Whoop Um Up Equestrian Campground built.
- ▶ 2016: Pioneer fire.
- ▶ 2020: Increased visitation occurs/COVID.
- ▶ Today: Increased proposals for recreation use.

▶ Treasure Valley's Population Growth



| | |
|---------|---------|
| ▶ 1969 | 189,000 |
| ▶ 1998 | 253,000 |
| ▶ 2016 | 409,000 |
| ▶ 2020 | 447,000 |
| ▶ Today | 470,000 |

Population numbers from [macrotrends.net](https://www.macrotrends.net)

Whoop Em Up Parking Expansion Objectives



Increase parking and access opportunities for multiple recreational user groups and a larger population base.



Proactively plan for future recreation needs and user needs (USFS, USDA Snotel, BSU Geosciences and now forecasting, Avalanche Science LLC, Boise Snowmobile Club, Private/Individual motorized and non-motorized recreation users.

What can the Forest Service do?

OPTION 1:

- ▶ Leave the parking area the same (no action)
- ▶ What objectives does this meet?



What can the Forest Service do?

OPTION 2:

- ▶ Leave the parking area the same but add a separate new ingress to reduce bottleneck issues
- ▶ What objectives does this meet?



What can the Forest Service do?

OPTION 3

- ▶ Expand parking area. (action)
- ▶ NEPA CE category 36 CFR 220.6 (e)(22) reconstructing a parking area.
- ▶ What objectives does this meet?



-  **Non motorized winter trails**
-  **New potential road access**
-  **New potential parking area**



-  ***Non motorized winter trails***
-  ***New potential road access***
-  ***New potential parking area***

Discussion...

- ▶ Please discuss the following at your table or in a small group of 4 for 20 minutes:

- ▶ Which proposal meets our objectives?



Increase parking and access opportunities for multiple recreational user groups and a larger population base.



Proactively plan for future recreation needs.

- ▶ If this does not meet our objectives, what would?
- ▶ Are you generally in support of this idea?

What can GBR do to help?



Letter of Support?

Specifications, Design, and Review
Site Management Planning
Community Outreach and Education



Brainstorm WHERE DO WE GO FROM HERE

Wrap Up: Where Do We Go from Here?

- ▶ Discussion points will be sent to you within 2 weeks
- ▶ Meeting will be held in early November
 - ▶ Draft vision statement for Whoop 'Em Up parking expansion
 - ▶ Create grant wish list



Questions...

Discussion will continue at Harrison Hollow!

Wrap Up: Where Do We Go from Here?



Notes from the meeting
will be sent to you within
two weeks.



Next meeting will be held
in early November.



Recommendations for next
meeting space can be
emailed to Liz.