

# Greater Boise Recreationists

September 7, 2023

Bogus Basin Ticket Office Meeting Room

5:00- 7:00 pm

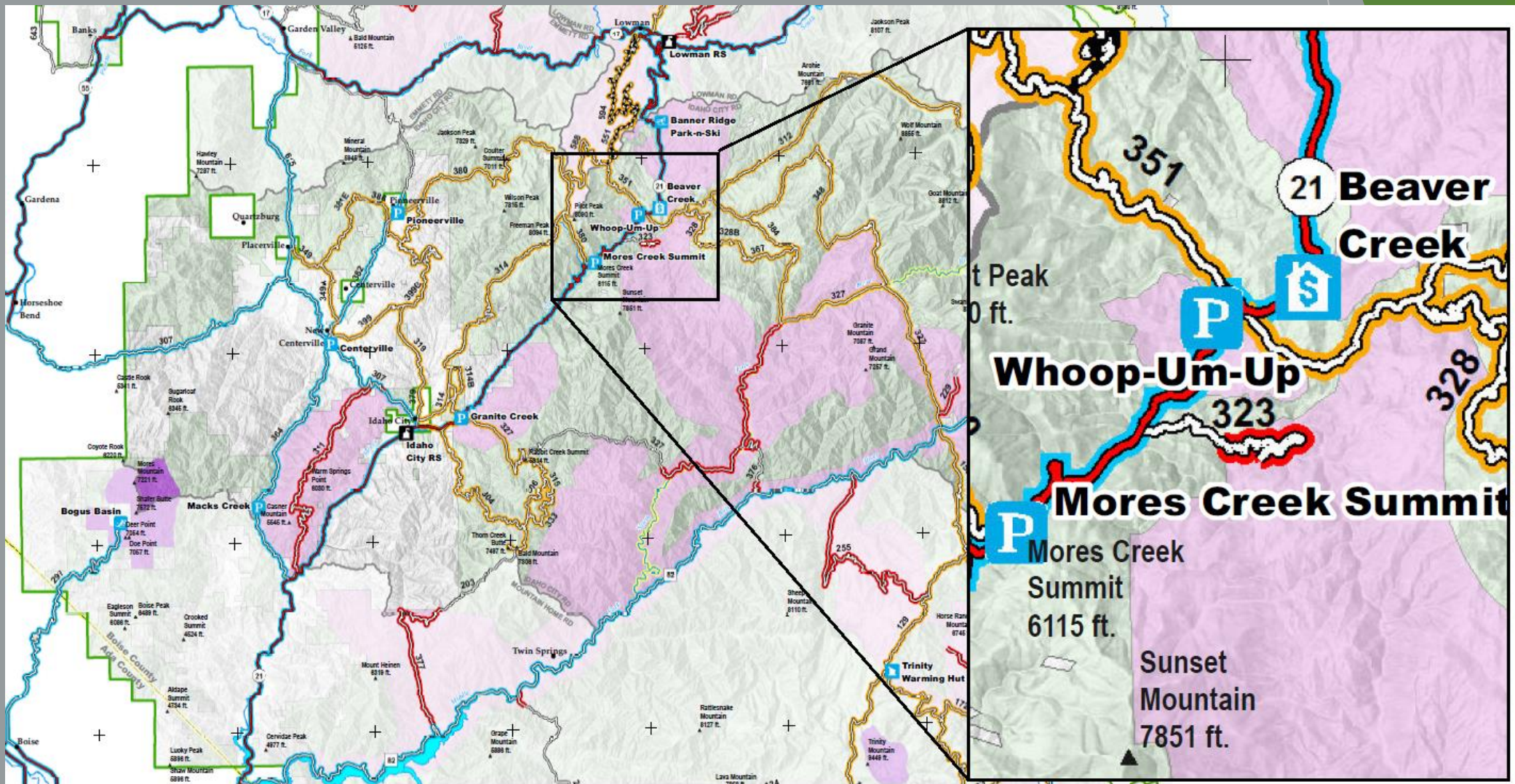
# Greater Boise Recreationist



Three focus areas identified, Wilson Creek, Bogus Basin, and Highway 21 corridor.



Whoop Um Up identified and selected for further discussion.



# Population Growth in the Treasure Valley

## ▶ Parking Area History

- ▶ 1969-72: Snowmobile clubs, Boise County, State Highway department, USFS, and Idaho City collaborate for parking areas and loop trails around Boise Basin.
- ▶ 1998: Whoop Um Up Equestrian Campground built.
- ▶ 2016: Pioneer fire.
- ▶ 2020: Increased visitation occurs/COVID.
- ▶ Today: Increased proposals for recreation use.

## ▶ Treasure Valley's Population Growth

▶ 1969	189,000
▶ 1998	253,000
▶ 2016	409,000
▶ 2020	447,000
▶ Today	470,000

Population numbers from [macrotrends.net](https://www.macrotrends.net)

# Objectives



Increase parking opportunities for multiple recreational user groups and a larger population base.



Proactively plan for future recreation needs.



# What could be done?

- ▶ Leave the parking area the same. Status quo
- ▶ How does this meet our objectives?





# What could be done?

- ▶ Increase Signage, Community Outreach
- ▶ What does this look like?
- ▶ How does this meet our objectives?





- ▶ Expand parking area
- ▶ NEPA CE category 36 CFR 220.6 (e)(22) reconstructing a parking area.
- ▶ How does this meet our objectives?



***Non motorized  
winter trails***



***New potential  
road access***



***New potential parking area***



# Discussion...

- ▶ Please discuss the following at your table for 20 minutes:

- ▶ How do these proposals meet our objectives?



Increase parking opportunities for multiple recreational user groups and a larger population base.



Proactively plan for future recreation needs.

- ▶ If they do not meet our objectives, what would?
- ▶ Which ideas are you in support of?



-  ***Non motorized winter trails***
-  ***New potential road access***
-  ***New potential parking area***



# What can GBR do to help?



Letter of Support



Specifications, Design, and Review  
Site Management Planning  
Community Outreach and Education

Questions...



# Wrap Up: Where Do We Go from Here?



Notes from the meeting  
will be sent to you within  
two weeks.



Next meeting will be held  
in early November.



Recommendations for next  
meeting space can be  
emailed to Liz.