

June 5, 2021, National Trails Day

Backcountry Horsemen of Idaho – Squaw Butte Chapter & BNF Northern Trail Crew member.



Peace Creek Trail #034

Length: 8.8 miles (14.2 km)

Use: Moderate

Difficulty

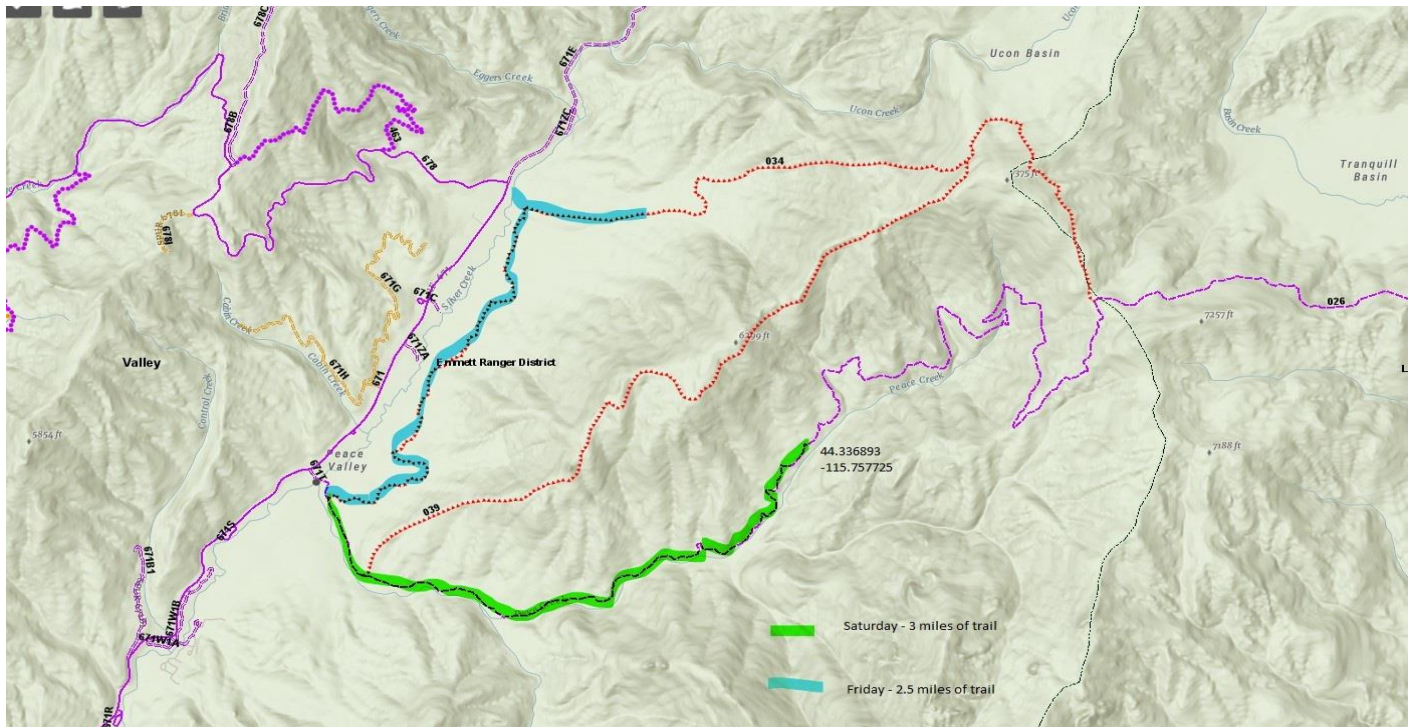
Motorcycle: Most Difficult

Horseback: Most Difficult

Hiking: Most Difficult

USGS Maps: Boiling Springs, Deadwood Reservoir

Recreation sites nearby: Tranquil Basin Trail, Rattlesnake Trail, Silver Creek Campground, Silver Creek Plunge, Silver Creek Guard Station



National Trails Day Project - Weekend

When	Sat 6/5/2021 8:00 – 20:00
Total participations	5
Location	Peace Creek Trail Head - Middle Fork Payette
North of Garden Valley. The USFS has flagged the campground-Trail head for our use.	

Full name	Phone	Mobile	I plan on arriving at the event	Number of People Attending	Created by
Rob Adams	208-861-0774 Lind...	208-781-0548 Rob ...	Friday Night	1	moosely.adams@gmail.com
Tracy Zamzow	2089896789	2089896789	Friday Night	1	Traczamz@gmail.com
Tom Zahradnicek & S...	208-880-0870	208-880-0870	Friday Night	2	tom@dakotabuckaroo.com
Gail & Terry MacDon...	208-365-9059 Terry...	208-989-7137 Gail ...	Friday Night	1	trmacdonald1@gmail.com
Bart Baer	916-230-2991	916-230-2991	Friday Night	1	baer.bartley@gmail.com

The Squaw Butte Crew was joined by Caitlyn Rice of the BNF North Trail Crew on Saturday.

Friday June 4, 2021 – Terry MacDonald and Rob Adams arrived at the Peace Creek trail head around 10:00 and saddle up to work on the Silver Creek (lower section) of the peace creek trail (see blue on map). We cleared downfall and brush on 2 miles of trail to where it crosses Silver Creek.

On Sunday members of the crew rode this section of trail and the first ½ mile of Devil's slide into the grove of old growth trees. Then stopped when they encountered several down trees. 15 downed trees were removed from this trail on Friday.

Saturday June 5, 2021 – The Squaw Butte crew + Caitlyn was on the trail by 09:00 with riding stock and two pack horses carrying gear. We encountered our first of 30 down trees about ¼ mile up the trail and that continued ever couple hundred yards until our turn-around point at 3 miles in. (44.336893 -155.757725) We also removed a lot of brush that was encroaching in the trail corridor.



This was the first down tree we encountered; someone had tried to cut it out but quit.



While working on the trail several others were also using this popular trail. We had two groups of dirt bike riders with 4 members in each group. 6 mountain bikers and a family group of 10 hikers with kids.

The dirt bike and mountain bike riders were asked to turn-around and ride elsewhere as it was not safe for us to let them pass and no place for them to go with more down timber just a short way up the trail.

The hikers did pass us and gave us a detailed trail report of what they saw. Downed trees were a mix of dead burn kill and ones that could have been beetle kill or wind damage.



Caitlyn working a down log, while Sheri trimming back brush







Total miles Clear – 5.3

Total major trees removed 45.

Trail generally in good shape for going through an area that has been burned multiple times, there is a lot of brush, some trail erosion and several still standing dead trees.

From what we saw, we believe there are still a lot of down trees on this trail that we had not reached yet as well as on the lower section of the Devil's Slide trail. At this time, a hiker might be able to do the loop, but not on a mountain bike or motorcycle.

Rob Adams

BCHI – Squaw Butte Chapter