

## Some Favorite Stock camping locations in South Western Idaho

**Pettit Lake – Tin Cup Trail Head** <https://sbbchidaho.org/PDF/TinCupTrailHeadGPS.pdf>

This trail leads to the popular Alice Toxaway Loop. You will encounter Alice lake, Toxaway lake, Twin lakes, and Farley lake along this loop. You will get to experience several mountain peaks including McDonald's peak, El Capitan, Park's peak, Snowslide peak and Imogene peak. There are several day hikes that you can take that lead off the Alice Toxaway Loop to experience other alpine lakes and peaks in the area. There are no campfires permitted on the Alice Toxaway loop, but you are encouraged to bring portable cook stoves. Motorized vehicles and bicycles are not allowed in any of the designated wilderness areas.

Latitude: 43.984423 Longitude: -114.871023 SRA 208-727-0430



The stock camping area is east of Pettit lake and has lots of space for trailer and easy access to water. There are also a couple of corrals that may be available for use on a first come basis. There is also a forest service toilet near the corrals.

### **Bull Trout Lake Trail Head**

[https://www.sbbchidaho.org/Directions/Directions\\_toBull\\_Trout\\_Lake.pdf](https://www.sbbchidaho.org/Directions/Directions_toBull_Trout_Lake.pdf)

**Trail Map:** <https://sbbchidaho.org/PDF/WarmSpringTrainNorthMap.pdf>

Bull Trout Campground lies adjacent to the 100-acre Bull Trout Lake and 6-acre Martin Lake which offer great fishing from shore or non-motorized boat. The campground offers group sites for that special reunion or company retreat and **equestrian sites** for the horseback riding enthusiast. Use is high during the summer months and the campsites are usually full on weekends and holidays. The road into the campground is usually not clear of snow until the middle of June, please check with the Lowman Ranger District for current road conditions.

This is a fee campground. 38 sites / single site: \$15.00 per night; double site \$30.00 per night; \$5.00 day use; \$75 groups sites (1-100 people) and sites with horse accommodations also available. Some first-come, first-served sites may be available. Please bring cash or check.

Additional vehicles may be subject to parking fees. Campers must have a horse to stay on an equestrian site. This is bear country; please keep a clean camp and be bear aware.

**Facilities:** This campground contains group, equestrian and single and double campsites, many of which are accessible. The group sites can accommodate up to 50 people each. Equestrian sites each contain a corral and large parking spur. Some sites are on the waterfront and have direct lake access, others have lake views.

Vault toilets, drinking water and trash collection are provided. Roads and parking spurs within the campground are dirt. A campground host is on-site.

Please contact the Lowman Ranger District at 208- 259-3361 for off-season camping information.

There is an overflow area east of the equestrian sites that is exceedingly popular with stock users that is free to use. Stock areas circled in red.



## **Grandjean Trail Head** <https://sbbchidaho.org/PDF/Grandjean.pdf>

Latitude: 44.15244 Longitude: -115.15892

<https://www.fs.usda.gov/recarea/sawtooth/recarea/?recid=5882>

Grandjean Campground is composed of 31 campsites near the border of the Sawtooth Wilderness and the Boise National Forest. All sites are first-come, first-serve. It is situated in an old growth ponderosa pine forest. The Idaho Centennial Trail heads south along the Payette River, ultimately reaching a lush alpine paradise filled with alpine lakes. Once in the lake area, you can complete the loop back to Grandjean. Sawtooth Lodge is one mile away. Natural hot springs are 1.5 mile away. Horse trips are operated out of the Sawtooth Lodge **and there are**



**10 sites for horse campers.** This is a terrific area for hiking and exploring the beautiful Sawtooth Wilderness.

Stock users like the overflow area west of the main camping area, there is good access to water and room to park a number of trailers. No fees and trailers can be left for trips into the wilderness.



## **Idaho City – Whoop-um-up Equestrian Campground**

<https://www.fs.usda.gov/recarea/boise/recreation/horseriding-camping/recarea/?recid=5176&actid=104>

Latitude: 43.9287 Longitude: -115.62926 Elevation: 5500

Whoop-um-up Equestrian Campground is located 56 miles northeast of Boise, Idaho, along State Highway 21, under a scenic pine forested canopy.

There are six campsites complete with feed boxes, hitching posts and water for stock. Wildlife and summer wildflowers are abundant. The historic town of Idaho City is just 11 miles south. The Crooked River runs near the site, offering rainbow trout fishing.

**Natural Features:** State Highway 21, also known as the Ponderosa Pine Scenic Byway, snakes along Mores Creek to Mores Creek Summit, Gold Fork, and Banner Ridge with breathtaking views of the surrounding mountains and forest. The Crooked River runs near the campground offering an opportunity to catch a rainbow trout.

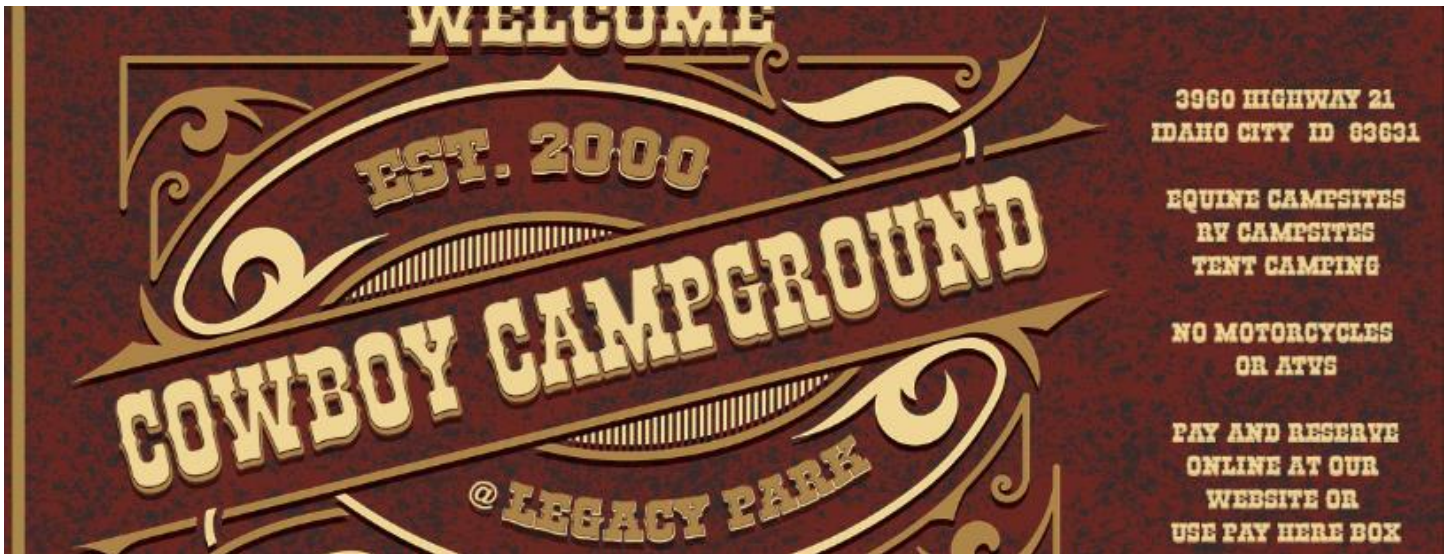
**Recreation:** Numerous trail opportunities are in the area, offering hiking, biking, and horseback riding.

No Reservations, this is a fee campground. Fee envelopes and a collection box are provided near the entrance. Please bring cash or check. 6 sites - Overnight fee: \$15.00 per site. Extra vehicle fees may apply.

The Upper Crooked River Trailhead includes visitor information. It serves Crooked River (#158) and Beaver Creek (#276) trails. Located not far from Edna Creek and Whoop Um Up Equestrian Campgrounds. The Whoop-Um-Up Trailhead includes a restroom and information kiosk.

## **Idaho City – Cowboy Campground**

<https://www.facebook.com/CowboyCampground/>



## **Middle Fork Payette – Peace Creek Trail head**

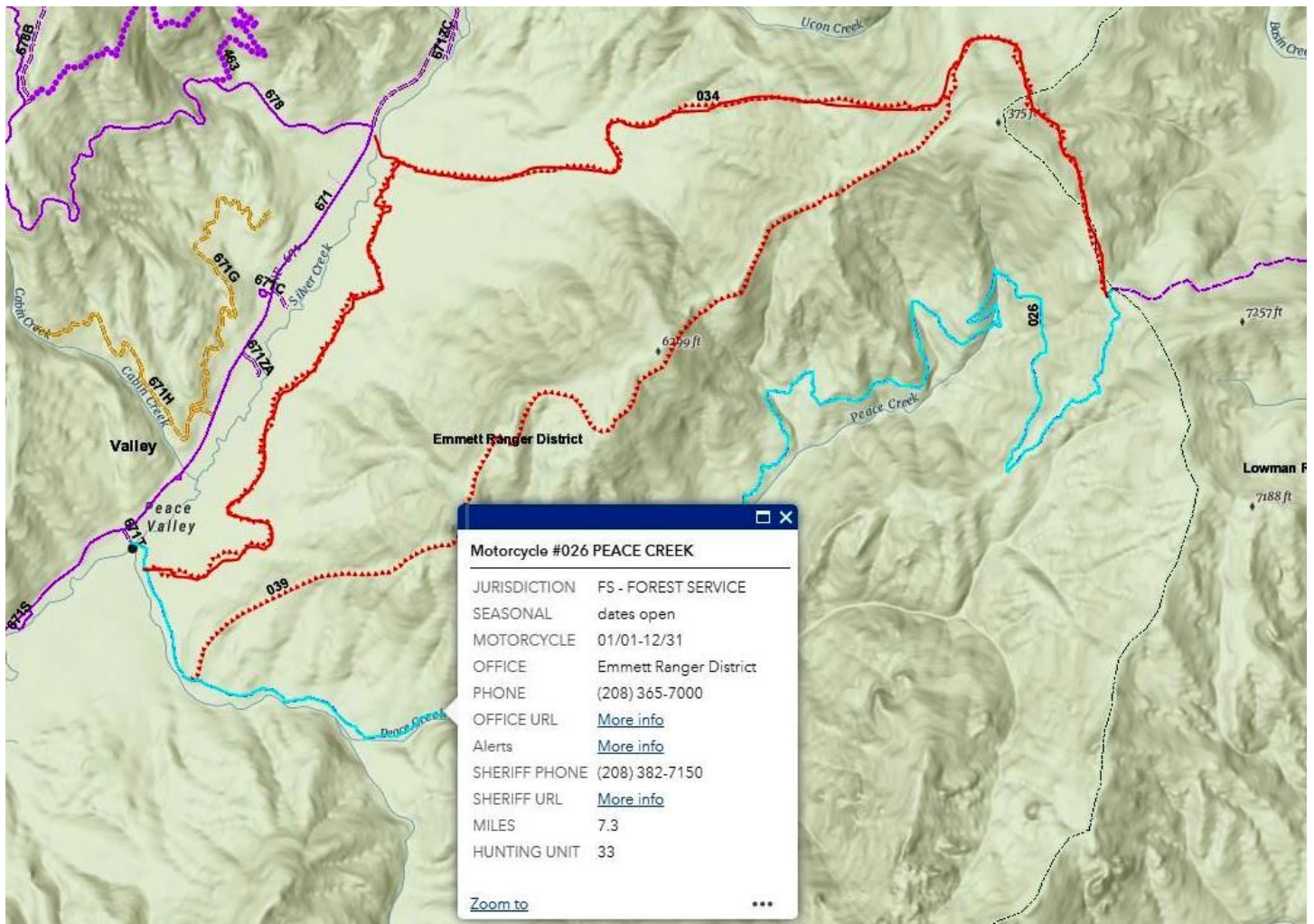
<https://sbbchidaho.org/Directions/LouAnnDirections-PeaceCreek.pdf>

[https://www.sbbchidaho.org/Directions/Directions\\_Peace\\_Creek\\_Trail.pdf](https://www.sbbchidaho.org/Directions/Directions_Peace_Creek_Trail.pdf)

Peace creek trail head and stock camp is in the extremely popular Silver Plunge area that is very busy in the summer. Best time to visit this area is during weekdays or in the Fall. This is a no fee camp and can support a number of trailers. Good access to trails and water.

The Peace creek trail crosses several tiny creeks that feed into Peace Creek where, in spring, wildflowers such as arnica, lupine and sticky geranium carpet the meadows. About 2 ½ miles from the trailhead, the trail steeply ascends a dry southern slope. To the north granite boulders provide scenic views in three directions. The trail levels, then ascends steeply once again through ponderosa pine forests and sagebrush hillsides. The steeper sections of the trail offer views of Peace Rock and the surrounding mountains and valleys.





## Middle fork of the Payette – Boiling Spring

<https://sbbchidaho.org/PDF/BoilingSpring.pdf>

Directions: <https://sbbchidaho.org/Directions/Boiling%20Springs%20Directions%202020.pdf>

This stock camping area is best visited in the fall when the water level in the Middle fork of the Payette river is low. There are a couple of nice riding trails, Wet Foot which climbs the ridge to the west of the campground and if you take it all the way to the top, give a view into Long Valley. The Boiling Springs trail heads north following the river and has many river crossings that are easy with low water but could be dangerous when the river is high.

Stock camping is in the overflow area on the east side of the river just a crossed the NF 678 bridge. Space for a number of trailers and good access to water.





Horse camping is in the overflow area both north and south of forest road 678.

There is good access to water for horses next to the bridge over the river.

## **Yellow Jacket Trail Head – Warm Lake Area – Cascade ID**

[https://www.sbbchidaho.org/PDF/Yellow\\_Jacket\\_TH.pdf](https://www.sbbchidaho.org/PDF/Yellow_Jacket_TH.pdf)

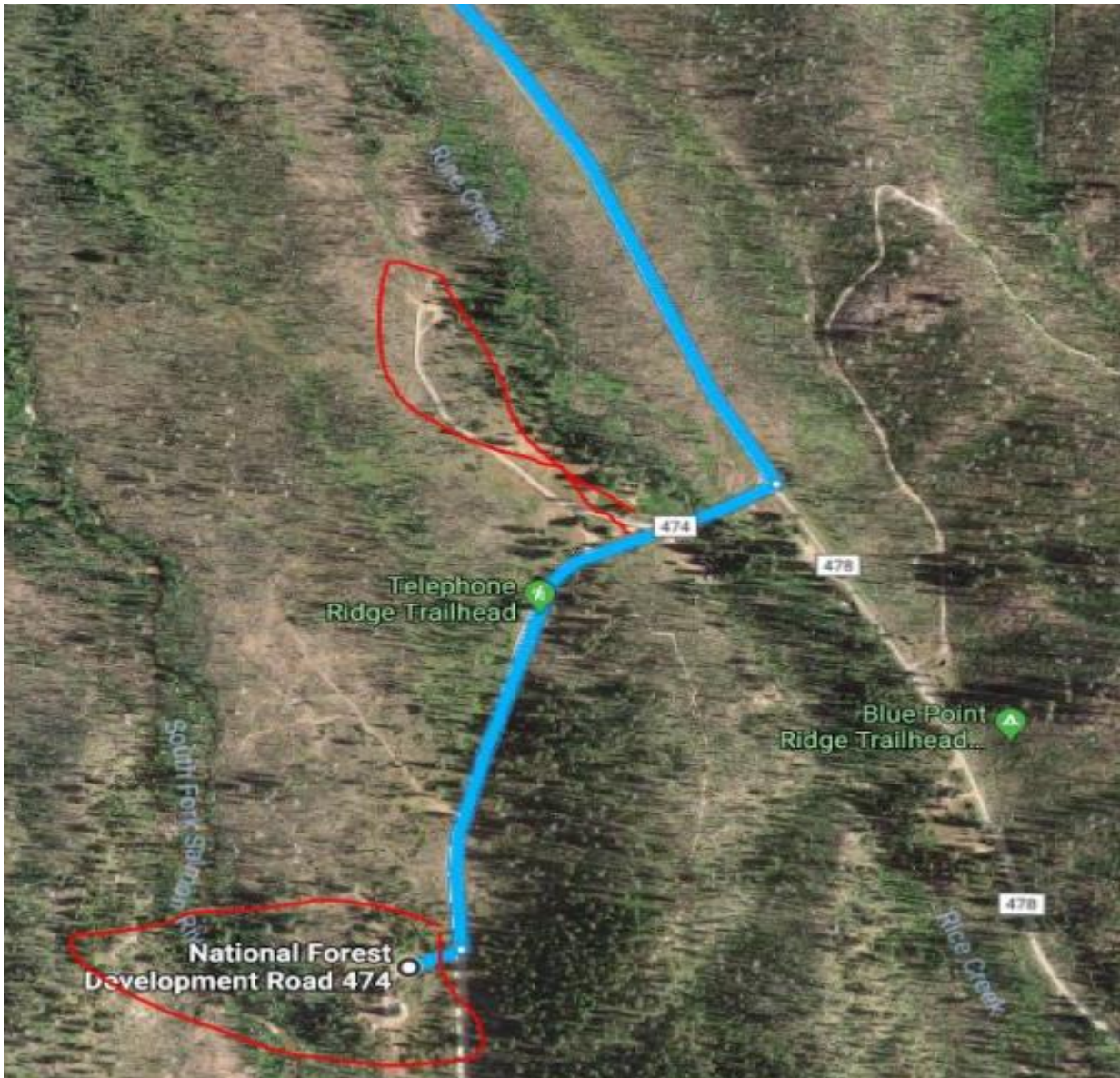
The north end of Stolle Meadows Road (474) is washed out (Winter of 2017) so continue down warm lake road to the next right turn which is 474CA or the cottage road for the west side of Warm Lake. Follow this road south and it will merge with the Stolle Meadows road. There are two horse camping areas, the preferred is next to the river at the Yellow Jacket Trail head, but the other is also nice in a meadow just after you turn. (also, immensely popular with other users)

GPS 44.5622284, -115.6835407



There are two excellent stock camping areas that are no fee areas with good access to water. There are a number of trails to ride in the area.

<https://sbbchidaho.org/PDF/LoopRidesYellowJacket.pdf>



## **Kennally Creek Campground & Trail Head – Paddy Flat Road**

[https://sbbchidaho.org/PDF/Kennally\\_Creek\\_Trail.pdf](https://sbbchidaho.org/PDF/Kennally_Creek_Trail.pdf)

<https://www.fs.usda.gov/recarea/payette/recarea/?recid=26931>

[https://www.fs.usda.gov/Internet/FSE\\_DOCUMENTS/fseprd688171.pdf](https://www.fs.usda.gov/Internet/FSE_DOCUMENTS/fseprd688171.pdf)

GPS 44.78232, -115.87778

Kennally Creek Campground is situated in a serene setting among mature forest along the banks of Kennally Creek. Each of 11 sites include a fire ring and picnic table. A stock loading ramp and hitching rails are available at the site. Potable water is typically available June - September.



All sites are available on a first-come, first-serve basis and camping is limited to an 18 day stay. The Interagency Pass and Golden Age Passport are accepted at this site. There are no hookups or trash receptacles. Please pack out your trash.

The North Fork Kennally Creek Trail #102, East Fork Kennally Creek Trail #099, and the Needles Summit Trail #101 depart immediately from the campground with additional trail access just a few miles down the road.

Excellent stock camping area with a number of trails to ride, most leading to a lake. This is one of the favorite destinations for Back Country Horsemen chapters. If the stock area is full there is an overflow area west of the campground. Stock water is available both at the overflow area and a crossed the road from the main stock area, see (W)

