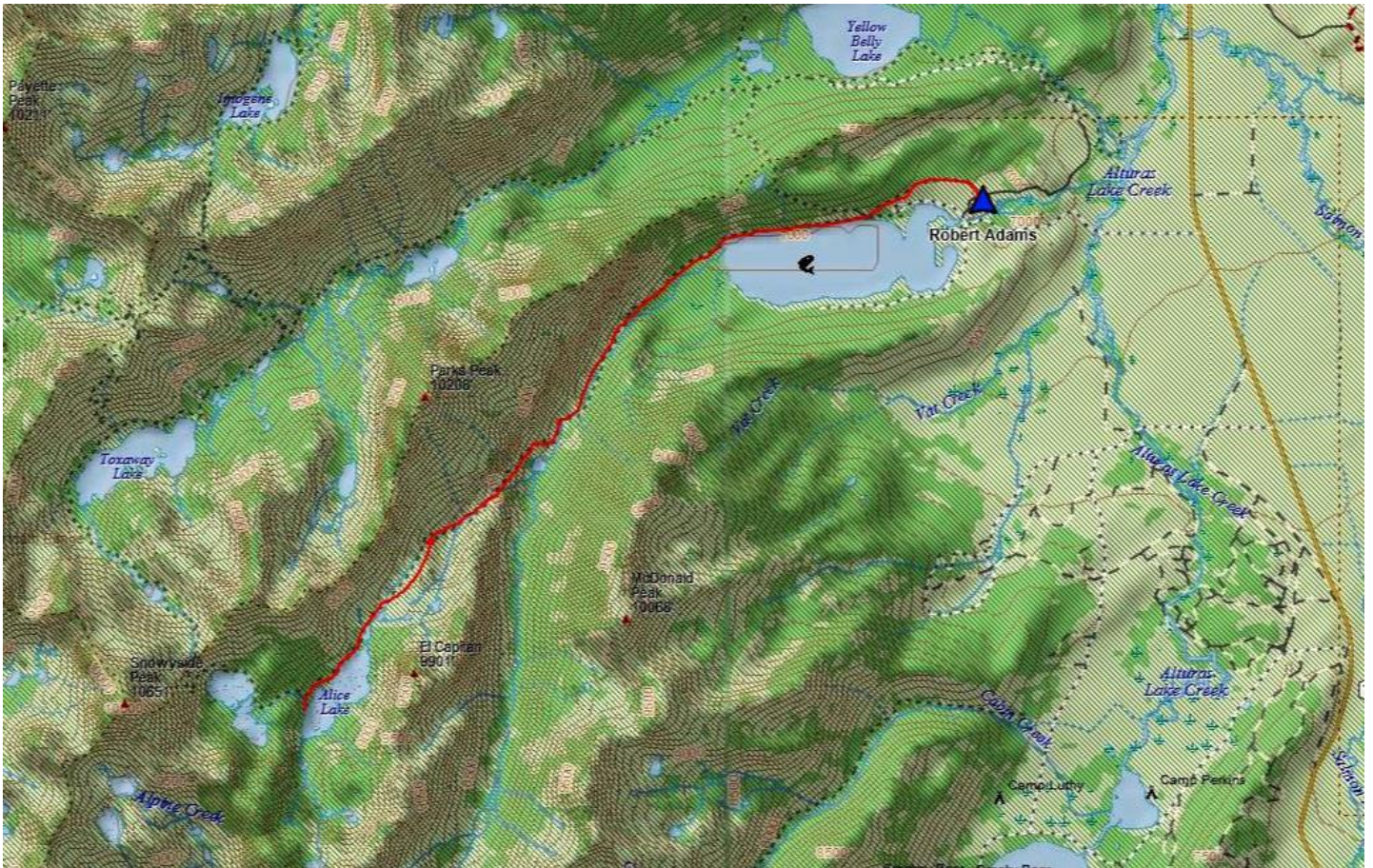
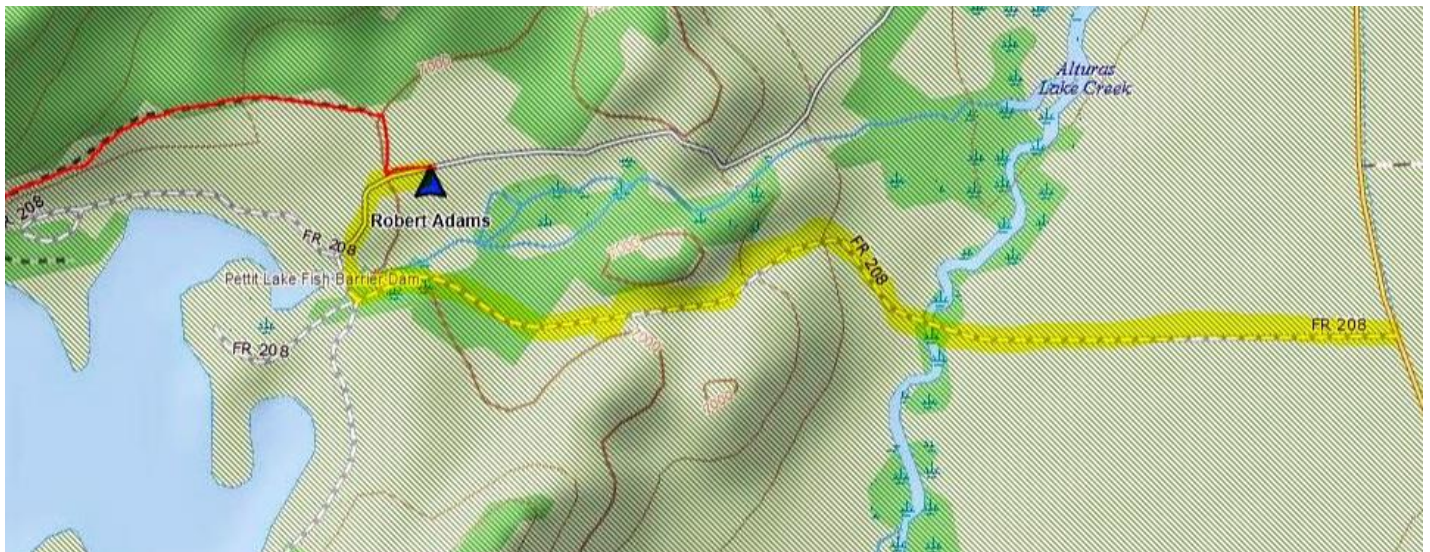


Alice Lake – ITA Pack-In



[Alice Lake](#) is an alpine lake in Blaine County, Idaho, United States, located high in the Sawtooth Mountains in the Sawtooth National Recreation Area. **Surface elevation:** 8,602'





On Friday Jeff (ITA) and Jon (SB) arrived at Tin Cup Trail head but camped in separate areas and were not aware of each other until Saturday morning. I arrived around 08:30 after leaving my place in Sweet at 06:00. They were mostly packed and were ready to get on the trail with three loads plus the cook, Mary Jo who rode one of Jeff's horses. It took me 2 ½ hours to get my stock saddled, loads built and loaded, before I hit the trail. I packed four horses and estimate they carried up around 450 pounds. The trail is six miles and 1800 feet of elevation gain with six water crossings by wading and one via bridge. This is a technical trail with several sections where meeting another pack string could be very dangerous. On my trip up I passed and talked to around 30 hikers, many who had dogs. Jeff, Jon and Mary Jo were waiting at the camp site at the upper end of Alice Lake and we had my stock unpacked in a matter of minutes and were heading back down the trail.







We arrived back at the trail head around 17:00 and after taking care of our stock, settled in the shade and enjoyed some cool refreshment. We planned the trip up on Sunday and swapped stories. The trail crew was scheduled to arrive at 10:00 Sunday morning which means that if you are quick and lucky with what they bring to haul up you can be on the trail by 11:00. We were neither and were happy to be on the trail by 11:30 with duffels and backpacks secured to our stock.



The forest service also brought some tools that needed to find their way up the trail.

On the ride up we met a man who's wife had been injured up at Twin Lakes and was looking for some help to get her down the mountain and to medical care. He said she had blown out her knee and could walk a bit, but in great pain. We said we would keep an eye out for her. On the way back out we found her with a couple of other hikers who were trying to help her at one of the six water crossings. She was done and could not walk a step more. Jeff put her on his gelding and slowly "and I am sure in great discomfort" Jon and Jeff got her down the mountain where she was taken to medical care. In all we hauled eleven loads up the mountain, total weight over 1000 pounds and one woman down that need to visit an emergency room.



Mary Jo, Jon and Jeff



Alice Lake



On the trip up my windshield ate a rock that fell off the hillside and hit the hood before trying to land in my lap – Banks-Lowman Road canyon area.