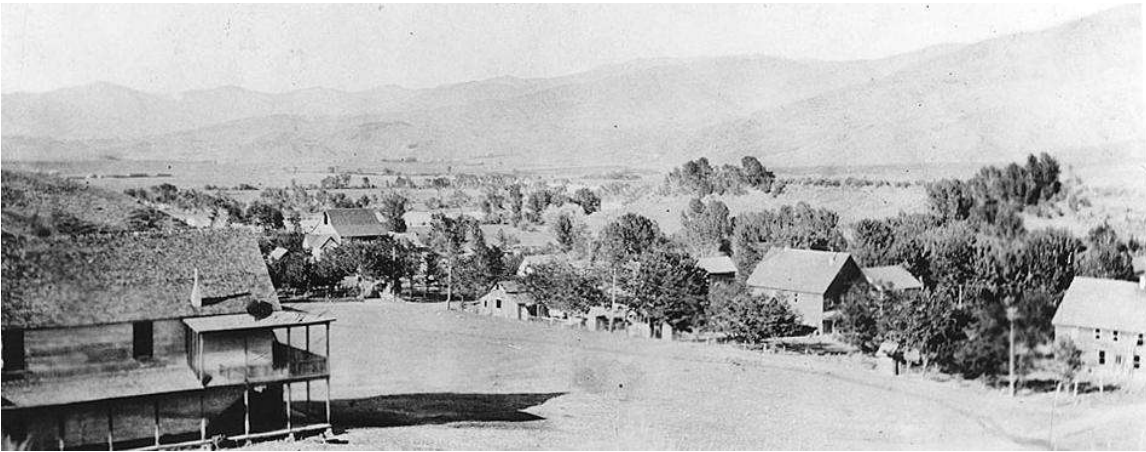


Horseshoe Bend History

Horseshoe Bend, ID



Horseshoe Bend, circa 1912
Courtesy Idaho State Historical Society



Horseshoe Bend blacksmith George Zimmer, 1916
Courtesy ISHS

In 1862, prospectors found gold in Boise Basin, located east of Horseshoe Bend on the other side of Boise Ridge. Their discovery led to one of Idaho's largest gold rushes. A year later, the basin's population swelled to between twelve and fourteen thousand people.

Horseshoe Bend was established when miners headed for Boise Basin settled on the river to wait out the winter snows. For a short time, the town was known as Warrinersville, after a local sawmill operator.



Horseshoe Bend hotel, circa 1907
Courtesy ISHS

In 1867, the name was changed to Horseshoe Bend. That year, a Kentucky miner named Felix Harris built a toll road to Placerville. It was rumored that Harris sometimes collected \$1,000 a day in toll fees paid with gold. After the gold rush subsided, Horseshoe Bend developed into a prosperous ranching and logging community. The school on Jackass Creek, shown above, served the community of Horseshoe Bend for over twenty years.



Horseshoe Bend school on Jackass Creek, circa 1895
Courtesy ISHS



Later Horseshoe Bend schoolhouse
Courtesy ISHS