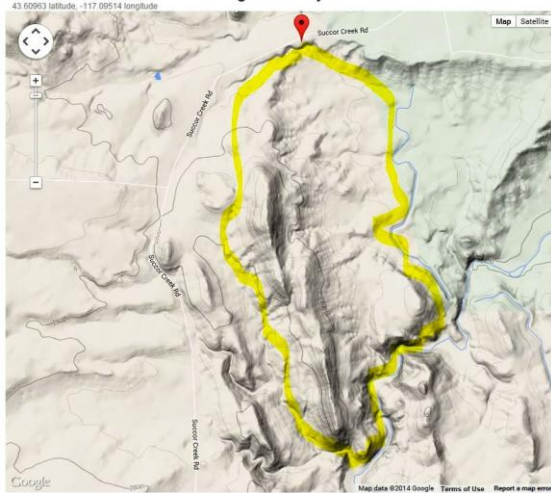


Succor Creek Loop Ride – October 12, 2014



It has become a tradition that the chapter hold a Sunday ride in the middle of October, last year it was with a [bunch of 4H kids](#) at the Emmett fair grounds. This year it was a loop ride in the northern section of the Succor Creek BLM management area. Laurie Bryan led a group of seven members on a three hour loop that circled a peak on the North East edge of the Succor Creek BLM management area. As the parking area was located just north of some high tension power lines and the ride rode under the lines twice this ride was dubbed the "Power Line Loop". As this was a new location for

the chapter and detailed direction to the trail head were not published, members who had signed up met at the Homedale high school and then convoyed together to a location that Laurie suggested. The trail head is a nice trailer parking area a bit south of the ranch cattle guard and just north of the power lines on the east side of the road. There is room for around twenty trailers there, and more parking if need close by. This ride would be suitable for all levers of rider experience and good year round except maybe during the hottest months. Other than some sections that cross some river rock, your horse doesn't have to be in great shape as there is very little climbing in the route. The trail follows a series of jeep type roads and traverses open spaces and a river canyon with great rock formation. In the river canyon there are a number of pools this time of year and I would expect in the spring running water in the river channel.



Laurie & Jack



Matt & Nancy on their matching paints

The eastern edge of the loop is marked by a fence and canal that you follow south to a dam where it meets the river. From there the trail swings south west and follows the river through a great canyon with interesting rock formations, caves, a huge eagle nest and pools of water where the stock can drink.



Rock out cropping, Eagles nest (up)



Shannon, Laurie, Nancy and Madison (down)



The day started off cool and a bit breezy, so everyone was bundle up, but after an hour or so, the jackets and sweatshirts came off as the day warmed and the wind lightened. All our horses and Ralph's mule had lots of energy so we made good time and between the jeep road and cattle trails, we could pick our own route and didn't have to ride in a line if we choose not to.



In the river canyon (up)



Riding the fence south along the canal, Nancy leads the way (down)



If you want a great spring or fall ride in some very pretty country, enter GSP coordinates 43.6096 -117.0951 into your system, or just drive down the Succor Creek road, past the cattle guard and look for a parking area just before the power lines. Once saddled, look east off the bench and you will see the jeep road that starts the ride or south for the one that brings you back to your trailer.

Riders – Ralph, Laurie, Nancy, Shannon, Matt, Madison & Rob.